

# AGENDA

**Meeting:** Marlborough Area Board  
**Place:** Marlborough Town Hall, 5 High St, Marlborough SN8 1AA  
**Date:** Tuesday 12 September 2017  
**Time:** 7.00 pm

---

**The Area Board welcomes and invites contributions from members of the public. The chairman will try to ensure that everyone who wishes to speak will have the opportunity to do so.**

If you have any requirements that would make your attendance at the meeting easier, please contact your Democratic Services Officer.

**Refreshments and networking opportunity from 6:30pm.**

---

Please direct any enquiries on this Agenda to Becky Holloway Democratic Services Officer, direct line 01225 718063 or email [becky.holloway@wiltshire.gov.uk](mailto:becky.holloway@wiltshire.gov.uk)

All the papers connected with this meeting are available on the Council's website at [www.wiltshire.gov.uk](http://www.wiltshire.gov.uk)

Press enquiries to Communications on direct lines (01225) 713114 / 713115.

---

## **Wiltshire Councillors**

Cllr James Sheppard, Aldbourne and Ramsbury (Chairman)  
Cllr Stewart Dobson, Marlborough East (Vice Chairman)  
Cllr Jane Davies, West Selkley  
Cllr Nick Fogg MBE, Marlborough West

## **RECORDING AND BROADCASTING NOTIFICATION**

Wiltshire Council may record this meeting for live and/or subsequent broadcast on the Council's website at <http://www.wiltshire.public-i.tv>. At the start of the meeting, the Chairman will confirm if all or part of the meeting is being recorded. The images and sound recordings may also be used for training purposes within the Council.

By entering the meeting room you are consenting to being recorded and to the use of those images and recordings for broadcasting and/or training purposes.

The meeting may also be recorded by the press or members of the public.

Any person or organisation choosing to film, record or broadcast any meeting of the Council, its Cabinet or committees is responsible for any claims or other liability resulting from them so doing and by choosing to film, record or broadcast proceedings they accept that they are required to indemnify the Council, its members and officers in relation to any such claims or liabilities.

Details of the Council's Guidance on the Recording and Webcasting of Meetings is available on request.

### **Parking**

To find car parks by area follow [this link](#). The three Wiltshire Council Hubs where most meetings will be held are as follows:

**County Hall, Trowbridge**  
**Bourne Hill, Salisbury**  
**Monkton Park, Chippenham**

County Hall and Monkton Park have some limited visitor parking. Please note for meetings at County Hall you will need to log your car's registration details upon your arrival in reception using the tablet provided. If you may be attending a meeting for more than 2 hours, please provide your registration details to the Democratic Services Officer, who will arrange for your stay to be extended.

### **Public Participation**

Please see the agenda list on following pages for details of deadlines for submission of questions and statements for this meeting.

For extended details on meeting procedure, submission and scope of questions and other matters, please consult [Part 4 of the council's constitution](#).

The full constitution can be found at [this link](#).

For assistance on these and other matters please contact the officer named above for details

1	<b>Chairman's Welcome and Introductions</b>	7.00pm
2	<b>Apologies for Absence</b>	
3	<b>Minutes</b> ( <i>Pages 1 - 8</i> )  To approve and sign as a correct record the minutes of the meeting held on <b>18 July 2017</b> .	
4	<b>Declarations of Interest</b>  To receive any declarations of disclosable interests or dispensations granted by the Standards Committee.	
5	<b>Chairman's Announcements</b> ( <i>Pages 9 - 16</i> )  To note the following items for information <ul style="list-style-type: none"> <li>• Draft Housing Allocations Consultation</li> <li>• Community Resilience – Emergency Planning</li> <li>• Interactive Public Meetings – Considering challenges ahead</li> <li>• Household Recycling Centre changes</li> </ul>	
6	<b>Partner Updates</b> ( <i>Pages 17 - 30</i> )  To note the attached Partner updates and receive any further information partners wish to share: <ol style="list-style-type: none"> <li>a. Wiltshire Police</li> <li>b. Dorset and Wiltshire Fire and Rescue Service</li> <li>c. Healthwatch Wiltshire</li> <li>d. Wiltshire Clinical Commissioning Group (CCG)</li> <li>e. Marlborough Area Development Trust (MADT)</li> <li>f. Transition Marlborough</li> <li>g. Town / Parish Councils</li> </ol>	7.15pm
7	<b>Feedback from previous grant recipients</b>  To receive presentations from Marlborough Explorer Scouts and Innov8 Sportz CIC on the outcomes of their projects which received funding from the Area Board.	7.25pm
8	<b>Local Youth Network Update and Applications for Youth Funding</b> ( <i>Pages 31 - 34</i> )  To receive an update on the Local Youth Network (LYN) and for the Area Board to consider an application to the youth grant fund as follows: <ul style="list-style-type: none"> <li>• £1996.89      Marlborough Area Development Trust                          Digital Makers Club</li> </ul>	7.40pm

9	<b>HomeRun School Travel App</b>	<b>7.45pm</b>
	To receive an update on the HomeRun App and to discuss the future of the pilot.	
10	<b>Supporting learners over 50</b>	<b>7.55pm</b>
	Glynwen Chetcuti, Job Coach at LearnDirect, will deliver a presentation about a new programme of support for learners aged 50 and over.	
11	<b>Waste and Recycling Strategy</b>	<b>8.15pm</b>
	Amy Williams and Martin Litherland, Wiltshire Council, will provide information about the consultation on Wiltshire's Waste and Recycling strategy.	
12	<b>Community Area Grant Scheme</b> ( <i>Pages 35 - 36</i> )	<b>8.35pm</b>
	To discuss the allocation of the Community Grant Fund for the remainder of the 2017/18 financial year.	
13	<b>Update from Community Engagement Manager</b>	<b>8.45pm</b>
	Andrew Jack, Community Engagement Manager (CEM), will provide an update of his recent work in the Marlborough Community Area.	
14	<b>Any Other Questions</b>	
	The Chairman will invite any remaining questions from the floor.	
15	<b>Urgent items</b>	
	Any other items of business which the Chairman agrees to consider as a matter of urgency.	
16	<b>Evaluation and Close</b>	<b>9.00pm</b>
	The next meeting of the Marlborough Area Board will be held on 28 November, 7pm at Marlborough Town Hall.	

# MINUTES

**Meeting:** MARLBOROUGH AREA BOARD  
**Place:** Marlborough Town Hall, 5 High St, Marlborough SN8 1AA  
**Date:** 18 July 2017  
**Start Time:** 7.00 pm  
**Finish Time:** 8.50 pm

---

Please direct any enquiries on these minutes to:

Becky Holloway Democratic Services Officer, Tel: 01225 718063 or (e-mail) [becky.holloway@wiltshire.gov.uk](mailto:becky.holloway@wiltshire.gov.uk)

Papers available on the Council's website at [www.wiltshire.gov.uk](http://www.wiltshire.gov.uk)

---

## Present:

### **Wiltshire Councillors**

Cllr James Sheppard (Chairman), Cllr Stewart Dobson (Vice Chairman),  
Cllr Jane Davies and Cllr Nick Fogg MBE

### **Wiltshire Council Officers**

Andrew Jack, Community Engagement Manager  
Helen Bradley, Locality Youth Facilitator  
Richard Broadhead, Head of Countryside and Rights of Way  
Becky Holloway, Democratic Services Officer

### **Town and Parish Councillors**

Marlborough Town Council – Mervyn Hall (mayor), P Cairns, Shelley Parker (clerk)  
Aldbourn Parish Council – Alison Edmonds  
Avebury Parish Council – Andrew Williamson  
Broad Hinton and Winterbourne Bassett Parish Council – Alex Laroche  
Berwick Bassett and Winterbourne Monkton Parish Council – Mark Saunders  
Froxfield Parish Council – C Costello  
Mildenhall Parish Council – Rob Bailey, Deirdre Watson  
Ramsbury and Axford Parish Council – Sheila Glass

### **Partners**

Wiltshire Police – Nick Mawson  
Dorset and Wiltshire Fire and Rescue Service – Jason Underwood

**Total in attendance: 35**

---

<u>Agenda Item No.</u>	<u>Summary of Issues Discussed and Decision</u>
65	<p><u>Chairman's Welcome and Introductions</u></p> <p>The Chairman welcomed everyone to the meeting and invited the Councillors and Officers present introduce themselves.</p>
66	<p><u>Apologies for Absence</u></p> <p>There were no apologies for absence</p>
67	<p><u>Minutes</u></p> <p>The minutes of the meeting of the meeting held on 23 May 2017 were presented and Cllr Stewart Dobson, seconded by Cllr Jane Davies, moved that they be approved and signed as a correct record</p> <p><b>Resolved:</b></p> <p><b>To approve and sign the minutes of the meeting held on 23 May 2017 as a correct record.</b></p>
68	<p><u>Declarations of Interest</u></p> <p>There were no declarations of interest.</p>
69	<p><u>Chairman's Announcements</u></p> <p>The Chairman drew the meeting's attention to the consultation being held on the Draft Housing Site Allocation Plan. 4 public exhibitions would be held and members of public were encouraged to submit comments on the draft plan before the end of the consultation period in mid-September.</p>
70	<p><u>Partner Updates</u></p> <p>The chairman drew the meeting's attention to the written reports in the agenda pack and invited partners to provide further updates verbally.</p> <p>Wiltshire Police Inspector Nick Mawson presented the written update. There were no further questions</p> <p>Dorset and Wiltshire Fire and Rescue Service Jason Underwood presented the written update. There were no further questions.</p>

	<p>Marlborough Town Council Mervyn Hall, the mayor of Marlborough, gave a verbal update on the recent activity of the town council, including: work done to secure a lease on the old youth centre for a use as a new community centre; the successful transfer and re-opening of the public toilets at George Lane; a puppet parade to mark the 70th anniversary of Pelham puppets; and a visit from the South West in Bloom judges. The mayor thanked the Area Board for their grant to support St John's students to contribute a puppet to the parade, and all the volunteers and police who supported the event.</p> <p>Marlborough Area Neighbourhood Plan Group Mervyn Hall, delivered an update on progress of the neighbourhood plan. A professional carparking survey had been undertaken in the town centre, and a housing needs report had been published, and plans were in place to look at the business and employment needs of the town.</p> <p>The Chairman thanked the partners for their reports and for their ongoing work.</p>
71	<p><u>Marlborough Downs Nature Enhancement Partnership</u></p> <p>Dr Jemma Batten and Arthur Witchell gave a presentation on the work of the Marlborough Downs Nature Enhancement Partnership, a collaboration between the Conservation trust, Wiltshire Council, and farmers with adjoining land across the Marlborough Downs. The partnership was set up with the aims of creating wildlife corridors, protecting habitats and landscapes, and encouraging people to use and enjoy the countryside.</p> <p>The partnership had been established in 2012 with fixed-term funding through DeFRA, based on similar models in operation elsewhere. Funding now came from around 40 farmers, and a charity had been set up. The work of the partnership was a combination of habitat conservation and connecting people with wildlife and agriculture, for example through a recent Open Farm Sunday which had attracted over 1600 visitors.</p> <p>Other work by the partnership had included: the creation of dew ponds across the downs so that wildlife in 80% of the landscape was now within a mile of a water source; the planting of "giant bird tables" which comprised a mix of crops that were left growing for birds to eat over the winter, and supplemented by millet and other grains provided in large bird feeders; wildlife surveys of farmland which had established that the Downs remained a habitat for harvest mice; the development of a map showing the location of bee populations; and an on-going programme of public workshops and sessions in schools.</p> <p>In response to questions it was reported that the original boundary of the area had been dictated by the funding available but that new farmers could now join the partnership providing their land directly neighboured an existing partner. It was explained that because of the need to cater for distinct landscapes, it was sometimes more sensible to create new partnerships than expand existing ones.</p>

	<p>Similar partnerships operated in the Chalke Valley, in the Pewsey Vale, and in Martin Down.</p> <p>More information about the work of the partnership can be found at <a href="http://www.spacefornature.net">www.spacefornature.net</a> and via a Facebook page.</p> <p>The Chairman thanked Dr Batten and Mr Witchell for their presentation and for the work of the partnership to get more people out into the countryside and enjoying their local landscape.</p>
72	<p><u>National Farmers' Union</u></p> <p>Andrea Witcombe, from the Wiltshire branch of the National Farmers Union (NFU) gave a presentation about the Union and its work in supporting farmers.</p> <p>The Union was founded in 1908 to highlight the needs of the farming community in England and Wales within national policy. It was explained that the Union had no political affiliations but instead aimed to lobby those in power on any decision that would impact agriculture or the farming community, and to keep members informed of changes to regulations and their responsibilities. Work was also undertaken to promote farming in the press and to encourage public interest in agriculture which met a high percentage of the nation's food needs and made a substantial contribution to the economy through exports and job provision.</p> <p>Challenges faced by the local farming community included hare coursing and crop circle creation, both of which had a high cost to property and crops; bovine TB which had caused significant reductions in livestock production; and challenges with the processes related to modernising agricultural dwellings. Negotiations to leave the EU were also having an impact on trade, workforce and domestic agricultural policy, with clarity needed in order to adequately plan and prepare for any resulting impact. It was reported that more work was needed to train domestic labour and to promote farming as an attractive career choice.</p> <p>The work of the union helped to ensure local farms remained viable, and that responsible use of the countryside was encouraged including livestock protection and support initiatives to tackle rural crime.</p> <p>The Chairman thanked Andrea Witcombe for her presentation.</p>
73	<p><u>Community Area Transport Group</u></p> <p>The notes of the CATG meeting held on 22 June 2017 were presented. Cllr Fogg provided an explanation of how the group operated and how issues were received and prioritised.</p> <p><b>Resolved:</b></p> <p><b>To receive the notes of the CATG meeting held on 22 June 2017</b></p>



74	<p><u>Local Youth Network Update and Applications for Youth Funding</u></p> <p>Helen Bradley, Locality Youth Facilitator, gave an update on the work of the Local Youth Network. A meeting had been held to consider the outcomes from the Joint Strategic Assessment (JSA) community event, and how these should influence how the youth fund would be allocated. Employment and training, mental health, and cyber bullying, had all be identified as important, and priority would also be given to projects that used the new Marlborough Community Centre and which made provision for transport from the villages where applicable.</p> <p>One application to the youth fund was considered. This was for £3240.00 from Marlborough Area Poverty Group for the facilitation of Summer activities for young people and the applicant was in attendance to provide information and to take questions. The project was intended to enable young people to access opportunities during the summer holidays that they may not otherwise be able to afford. Cllr Jane Davies, seconded by Cllr Nick Fogg, moved that the application be granted, and following a vote it was:</p> <p><b>Resolved:</b></p> <p><b>To award £3240.00 to Marlborough Area Poverty Group for the facilitation of Summer activities for young people.</b></p>
75	<p><u>Community Area Grant Scheme</u></p> <p>The Area Board considered two applications to the Community Area Grant Fund. These included an application from Froxfield Memorial Hall for the refurbishment of their toilet facilities, and an application from Ramsbury Pre-School for support with their New-build project. Both applicants were in attendance to provide further information on their projects and to answer questions.</p> <p>Froxfield Memorial Hall had been gifted to the village 70 years ago and required ongoing maintenance and repair. The group continued to do ongoing fundraising but need additional funding to refurbish the gentlemen’s toilet facilities.</p> <p>Cllr Stewart Dobson, seconded by Cllr Nick Fogg, moved that the grant be awarded</p> <p>Ramsbury Pre-School had been operating out of the Methodist Community Hall under a rent agreement and the new-build would enable them to have their own space, including outdoor space, and to cater for a larger number of children, including more local children.</p> <p>Cllr Jane Davies, seconded by Cllr Nick Fogg, moved that the grant be awarded</p>

	<p>After discussion of both applications it was</p> <p><b>Resolved:</b></p> <p><b>To award £950.00 to Froxfield Memorial Hall for refurbishment of their toilet facilities.</b></p> <p><b>To award £5000.00 to Ramsbury Pre-School towards their New-build project.</b></p>
76	<p><u>Councillor-Led Initiative</u></p> <p>Members considered a Councillor-Led Initiative from Cllr Stewart Dobson for £10,000 towards the refurbishment of the former youth centre in Marlborough into a new Community and Youth Centre.</p> <p>Cllr Dobson explained that the building had been transferred from Wiltshire Council to Marlborough Town Council via a seven-year lease while the permanent asset transfer was formalised. It was anticipated that the Community Centre would become an important asset for the town and that there had been a lot of ideas about how to get the community involved in its development.</p> <p>In response to points raised in the discussion that followed, the following clarifications were made: that the asset transfer would be free of cost for the Town Council and that this should be finalised within the next 18 months; and that this was a good opportunity to have the building renovated and put to good use in the community.</p> <p>Cllr Stewart Dobson, seconded by Cllr Jane Davies, moved that the grant be awarded.</p> <p><b>Resolved:</b></p> <p><b>To award £10,000 to Marlborough Town Council towards the refurbishment of the former youth centre into Marlborough Community and Youth Centre.</b></p>
77	<p><u>Update from Community Engagement Manager</u></p> <p>Andrew Jack, Community Engagement Manager, provided an update on his recent activity in the Marlborough Community Area.</p> <p>Discussion was ongoing in planning the World War One centenary tree planting programme and there had been a lot of interest from the villages to get involved. Parishes who had not yet expressed an interest still had an opportunity to do so.</p> <p>There had been a soft launch for the Homerun, school travel planning, app for the pilot funded by the Area Board and parental sign up had been positive. The phone app would support children and their parents to make easier and more</p>

	<p>environmentally-friendly journeys to school, and would provide the school with data for creating and maintaining their travel plan. Any funding allocated by the Area Board for licenses which was not used would be returned to the health and wellbeing budget.</p> <p>The Big Pledge activity challenge held in May and June had been popular and 12,314 had covered a combined total of 324,695km. Discussions were underway about how to introduce more walking sports to Marlborough, including walking football and rugby. These sports were particularly aimed at those aged 55 and over.</p> <p>The Dementia Action Alliance steering group was now well established and going from strength to strength. A new drop-in had opened in the Jubilee Centre on Thursday afternoons.</p> <p>In response to a question, it was confirmed that police warning signs at beauty spots in the area would be installed as planned and that the delay had been due to a design issue.</p> <p>The Chairman thanked Andrew Jack for the update and his continued work in the community.</p>
78	<p><u>Any Other Questions</u></p> <p>There were no other questions.</p>
79	<p><u>Urgent items</u></p> <p>There were no urgent items.</p>
80	<p><u>Evaluation and Close</u></p> <p>The Chairman thanked everyone for attending and reminded members that the next meeting of Marlborough Area Board would be held on 12 September 2017 at Marlborough Town Hall.</p>

This page is intentionally left blank



## Formal Consultation on the Pre-Submission Wiltshire Housing Site Allocations Plan

**Friday 14 July to Friday 22 September 2017**

The Draft Plan will identify, where necessary, new allocations for housing at settlements and review settlement boundaries.

The draft Plan can be viewed from Friday 14 July at the council's main offices at Monkton Park (Chippenham), Bourne Hill (Salisbury) and County Hall (Trowbridge) and in all Wiltshire Council libraries during normal opening hours or can be available to view on the council's website at <http://www.wiltshire.gov.uk/wiltshsgsiteallocationsplan>

There will be four public exhibitions where you can find out more about the consultation.

These will be held between **12pm** and **7pm** at:

**17 July:** The Neeld Hall (Neeld Community and Art Centre) in Chippenham

**19 July:** Guildhall, Salisbury

**24 July:** Devizes Town Hall

**26 July:** County Hall Trowbridge

**Please return comments to Wiltshire Council, by 5pm on Friday 22 September 2017 via the following ways:**

Online: <http://www.wiltshire.gov.uk/wiltshsgsiteallocationsplan>

By post to: Spatial Planning, Economic Development and Planning, Wiltshire Council, County Hall, Bythesea Road, Trowbridge, Wiltshire, BA14 8JN.

By e-mail to: [spatialplanningpolicy@wiltshire.gov.uk](mailto:spatialplanningpolicy@wiltshire.gov.uk)



## Chairman's Announcements

<b>Subject:</b>	<b>Community Resilience- Emergency Plans</b>
<b>Officer Contact Details:</b>	<b>Sarah Kelly (Emergency Plan Resilience and Response Officer)</b> <a href="mailto:Sarah.Kelly@wiltshire.gov.uk">Sarah.Kelly@wiltshire.gov.uk</a>

Planning for emergencies is an important job for the organisations who respond to incidents, but it is also important for local communities to think about how you may be able to assist the emergency services and other responders.

The main way of doing this is to create a community emergency plan. This can be as simple as a contact list for key people within the community, or a more comprehensive plan which covers the emergencies which are most likely to occur in your area (rather than just the absolute worst-case scenarios), and how your community would respond to them. Your local knowledge is also very important to the organisations who will be responding to the situation. Information such as where floods most often, what roads could be made inaccessible by snow, how badly a power cut would affect your community and where the nearest places of safety are (village/community hall etc) can greatly help the emergency services, council and other groups. Having this recorded beforehand could potentially save a lot of time if the information is needed in response.

Keeping your plans flexible is also important; they should be able to be picked up for almost anything, even if you only use the contact details and information on the nearest community centre for most events.

Getting started with these plans can be difficult, and knowing what to include even harder. If you are stuck with where to begin, there is a template available to get you started with writing an emergency plan for your area. Please contact Sarah Kelly, Emergency Planning Officer, Wiltshire Council, if you would like a template, or advice about writing your plan. There is also a Community Risk Register Available on the Wiltshire & Swindon Local Resilience Forum (LRF) website (<http://wiltshireandswindonprepared.org.uk/community-risk-register/>). This details the different risks to the Wiltshire and Swindon area, and how likely they are to happen. This document should be adapted to your area if you wish to use its information, as not all risks are relevant to each part of Wiltshire.

It is recommended that to keep your plan in its best condition, it should be exercised with everyone who has a role in it once a year, and contact details should be updated at least once a year, or when there has been a change. There is an exercise template available if you would like to exercise your plan, it is available as a PowerPoint presentation or a Word document, again please contact Sarah Kelly if you would like to discuss the exercise or be sent a template.





# Chairman's Announcements

<b>Subject:</b>	<b>Voice Your Views at Interactive Public Meeting</b>
<b>Officer Contact Details:</b>	<a href="mailto:events@wiltshire.gov.uk">events@wiltshire.gov.uk</a>

## Invitation to voice your views at interactive public meetings

You are invited to attend one of a series of meetings that Wiltshire Council is hosting to discuss the challenges that the council is facing and the impact that these could have.

The council currently spends around £900m each year on more than 300 services and has recently agreed a plan to deliver an ambitious programme of work over the next 10 years.

The council's vision is to create strong communities, prioritising growing the economy, protecting those who are most vulnerable, and working with partners in an innovative and effective way.

Changing demographics and the continuing reduction in funding from central government mean we have to continue to find substantial savings and work even more closely with local communities to encourage and support them to do more for themselves.

The council's cabinet members will be attending the meetings to discuss the challenges and to invite and listen to your views and suggestions on how these can be best managed.

Details of the informative and interactive meetings are set out below.

We look forward to seeing you and hope that you will be able to join us. It would be extremely helpful if you could confirm your attendance by emailing [events@wiltshire.gov.uk](mailto:events@wiltshire.gov.uk)

Date	Location	Venue	Time	
5 September	Salisbury	City Hall	5.30pm	Refreshments available
14 September	Chippenham	Monkton Park	5.30pm	Refreshments available
25 September	Trowbridge	County Hall	5.30pm	Refreshments available
26 September	Devizes	Corn Exchange	5.30pm	Refreshments available

## ***Chairman's Announcements***

# Chairman's Announcement

<b>Subject:</b>	Information regarding your local Household Recycling Centre
<b>Officer Contact Details:</b>	<a href="mailto:wasteandrecycling@wiltshire.gov.uk">wasteandrecycling@wiltshire.gov.uk</a>

Following the award of a contract, nine household recycling centres (HRCs) will be operated by FCC from 2 October 2017. We would like to update the area boards about the changes that residents will see at their local sites.

There will be no changes or closures at the HRCs at Purton and Lower Compton near Calne as these will continue to be operated by Hills Waste Solutions.

The change in contractor has allowed the council and FCC to review the current site layouts to make some changes. Where possible, we are making improvements to the traffic management in and out of the sites to help reduce the queuing issues that occur at some of the sites.

The sites will have their white lining repainted and new containers will be placed on the sites. The site signage and staff uniforms will be updated.

**To allow for the refurbishment works to take place each site will be closed, one at a time, for a short period of time between 2 October and 17 December 2017**

Please see below for your area board's local site(s), the closure date of that site(s), and the closest alternative site(s) which can be used during the closure period.

We would encourage all residents to check online before they travel as sites will be closed on their usual days in addition to the dates below.

## Chairman's Announcement

Area Board	Local HRC(s)	Closure Dates	Alternative HRC(s)
Chippenham	Stanton St Quintin	4 December 2017 (Reopens on 18 December)	Lower Compton
Melksham	Melksham	30 October 2017 (Reopens on 11 November)	Trowbridge / Devizes
Malmesbury	Stanton St Quintin	4 December 2017 (Reopens on 18 December)	Purton
Warminster	Warminster	11 October 2017 (Reopens on 20 October)	Trowbridge / Amesbury
Pewsey	Everleigh	23 October 2017 (Reopens on 28 October)	Marlborough / Devizes
Marlborough	Marlborough	2 October 2017 (Reopens on 14 October)	Devizes / Everleigh
Bradford on Avon	Trowbridge	13 November 2017 (Reopens on 26 November)	Melksham
Salisbury	Salisbury	9 November 2017 (Reopens on 17 November)	Amesbury
Amesbury	Amesbury	21 November 2017 (Reopens on 1 December)	Salisbury / Everleigh
Devizes	Devizes	29 November 2017 (Reopens on 9 December)	Melksham / Lower Compton / Everleigh
Tidworth	Everleigh / Amesbury	Everleigh - 23 October 2017 (Reopens on 28 October) Amesbury - 21 November 2017 (Reopens on 1 December)	Everleigh / Amesbury
Calne	Lower Compton	No Closure	
Corsham	Stanton St Quintin	4 December 2017 (Reopens on 18 December)	Melksham / Lower Compton
RWB and Cricklade	Purton / Stanton St Quintin	Purton - No Closure Stanton - 4 December 2017 (Reopens on 18 December)	Purton
Southern	Salisbury	9 November 2017 (Reopens on 17 November)	Amesbury
Trowbridge	Trowbridge	13 November 2017 (Reopens on 26 November)	Melksham / Warminster
South West	Salisbury / Warminster	Salisbury – 9 November 2017 (Reopens on 17 November) Warminster – 11 October 2017 (Reopens on 20 October)	Salisbury / Warminster
Westbury	Warminster / Trowbridge	Warminster – 11 October 2017 (Reopens on 20 October) Trowbridge - 13 November 2017 (Reopens on 26 November)	Warminster / Trowbridge

For more information or if you have any queries, the team can be contacted at [wasteandrecycling@wiltshire.gov.uk](mailto:wasteandrecycling@wiltshire.gov.uk) or on 0300 456 0102.

## Marlborough Area Board Report

September 2017

### 1. East Community Policing Team

**Sector Head:**  
Inspector Nick Mawson



**Sector Deputy:**  
Sergeant James Williams



**Community Coordinator:**  
PC Teresa Herbert



**Marlborough PCSO's:**  
PCSO Lucy Stonestreet



PCSO Mark Braithwaite



**An update from Helen KENNEDY Head of Media Services:**

Many areas boards are raising the issue that our 101 Call handling for Wiltshire remains below the standards we wish to deliver.

To give context to the current position it is important to understand that there has been a significant shift in the way we manage our demand within the Police Service.



The Community Policing Model recognises that the Police service is being asked to do 'more with less' and helps to address this fact by assessing the demand at the first point of contact. The call handler will assess the threat, harm and risk without necessarily tasking an officer to attend in the first instance. The adage they work to in our Communication Centre is to get it right first time.

As a result of this change in handling we have seen an increase in waiting times for calls to be answered.

However, since we initiated the CPT Model, calls for immediate help have seen an improvement.

It is also important to note that we have engaged in a significant recruitment phase for many roles within the CPT. Police Officers, PCSO, Local Crime Investigators and Prisoner Transport Team members have all been recruited. Where do we find people with the right skills to do these roles? One area is our Communication Centre. These are members of Police Staff who have been trained in aspects of law and have good communication skills. It is not surprising that they then wish to use their training and continue to develop. Consequently recruitment and retention of staff is a challenge, however to reassure you our Communication Centre Leadership team have a well-established rolling recruitment programme in place.

We continue to review and assess where improvements are needed. We are currently exploring solutions including on-line reporting of crime, a more informative website and on-line chat and hope this different access channels will start to be available late summer 2017. We will not solve this issue overnight and are working hard any problems to deliver the best possible service to those who contact us.

Thank you

Please follow us on:

Twitter <https://twitter.com/wiltshirepolice>

Facebook <https://www.facebook.com/wiltshirepolice/>

Or sign up to Community Messaging <https://www.wiltsmessaging.co.uk/> Our free Community Messaging service will also help keep you updated about policing and crime in your local area.

## **Community Policing Team Current Priorities, Marlborough Area**

### **Dwelling and Non-Dwelling Burglaries**

Targeted patrols continue throughout the Marlborough villages by members of the East Policing Team, in efforts to disrupt, deter and deal with criminality. Positive outcomes have resulted following stop searches of vehicles and nominals. One recent stop by Pc STEELE and Pc BARRATT at Aldbourne, early hours of 21<sup>st</sup> August resulted in excellent intelligence gathering, of a known nominal and further enquiries are to follow relating to this individual.

We have investigated forty seven burglaries, including attempted burglaries, in the Marlborough area since 1<sup>st</sup> May 2017, which is of concern. However, this has reduced to only one incident during August. This compares with thirty burglaries in the Devizes area and seventeen in the Pewsey villages.

Of those investigated in the Marlborough area we can report that positive outcomes have resulted from a number of these incidents.

A nominal, previously of no fixed abode, currently on remand in prison, has been identified and admitted at his recent interview in prison responsibility for two dwelling burglaries at Ogbourne St George, (1<sup>st</sup> May 2017). This individual is also being dealt with for a number of other burglaries in the Swindon area.

Following a forced entry via a rear door to a dwelling in Marlborough, daytime on 2<sup>nd</sup> May 2017, two suspects have been identified. Enquiries are continuing.



Of another incident, two suspects were seen on CCTV within a property in Marlborough High Street, into which entry was gained via forcing of the front door at 2316 hours on Tuesday 19<sup>th</sup> July 2017. Nothing was stolen. Undetected currently.

A resident of Ramsbury has been charged and convicted of four burglaries and driving offences, which have occurred in recent months, in the areas of Ramsbury, Baydon and Mildenhall. Luke PATTERSON has been given a 26-week prison sentence suspended for 24 months. He must also complete a drug rehabilitation course and pay compensation of £1,179. His driving licence was also endorsed with six penalty points.

We are currently seeking the owners to a quantity of recovered property which we believe to be stolen, including high-value cycles, power tools, and fishing equipment, seized during the arrest of two persons on suspicion of burglaries. A Wiltshire Police press release of Friday 18<sup>th</sup> August 2017 includes a number of photographs of these items. Their identification will assist with our enquiries.

Our enquiries into burglaries within east Wiltshire have identified offenders, who include those not local to Wiltshire. Some are involved with organised crime groups who have travelled to the area to commit these offences. Those target hardening measures implemented within our partnership working - including the CCTV facilities both within Marlborough and village communities, policing operations, intelligence development and community engagement - have enabled positive progress on a number of offences under investigation and have disrupted and deterred other incidents from taking place. Thank you for your community efforts around this.

### **Summer Burglary Campaign**

The campaign which ran between 17 - 23 July aimed to educate residents about simple precautions they can take to protect their home and garden from being targeted by burglars.

To improve the security in and around your home we asked householders to remember the following advice:

- **Lock your doors and windows every time you leave the house, even if you're in the garden, and make sure you have approved locks or bolts on all doors and windows**
- **Never leave a spare key in a hiding place like in a plant pot or letterbox - a thief knows all the hiding places**
- **Keep all keys, purses and wallets out of sight and away from the letterbox**
- **Consider installing a burglar alarm, and only use a company that is registered or certified with the NSI or the SSIAB**
- **Do not open the door to anyone you don't know or are not expecting. Always check by using a spy-hole or look through a window**
- **Make sure that you have up to date contents insurance**
- **Register all serial numbers from electrical items, tools and garden equipment with Immobilise.com the free national property register. Mark items without serial numbers with an artificial DNA property marker such as Smartwater or SelectaDNA**
- **Do not keep large amounts of cash at home - it is much safer in a bank or building society**
- **Trim back any plants and hedges at the front of your property to no higher than 1 metre to remove hiding places**
- **Always report any suspicious activity, note any vehicle registrations, descriptions of persons**

## involved and direction of travel

- Use a timer to set lights to mimic your usual activity when you are not at home
- Take photographs of all jewellery including hallmarks and keep them safe. Also consider using an artificial DNA property marker on jewellery or other valuable items
- Make sure any bolts are low enough so they cannot be opened by reaching over the top of the gate

## Theft from Motor Vehicles

A total of thirty seven thefts from vehicles have occurred within the Marlborough area since 1<sup>st</sup> May 2017. This compares with eighteen in the Devizes area and twelve in the Pewsey villages.

Of the Marlborough villages, incidents have included a number of thefts of fuel from farm machinery during harvest, and batteries from tractors, Lorries and horse boxes. Incident locations include Froxfield, Mildenhall, Ogbourne St George, Aldbourne and Chilton Foliat.

Other incidents have included the removal of property from insecure vehicles. We have also seen a spate at our beauty spots of West Kennett, Avebury, Hackpen and Manton this month.

We have just received delivery of the Area Board-funded signage and have plans in place for their fitting at relevant locations, at height, to avoid their removal by those who engage in this activity. Victims to this type of crime include tourists visiting our beauty spots; such signage and information will help to reduce their risk of being victim to crime.

We continue to target police patrols to those areas and release information via press, community messaging and social media with such alerts. Intelligence work is ongoing in relation to those nominals active in this area of criminality and policing operations continue. Thank you for enabling the signage acquisition.

Two brothers from the south Wiltshire area have recently been convicted of a number of these types of offences, committed within Wiltshire and Dorset:

Edward and Lenny Wells stole handbags, wallets, purses, sat-navs, mobile phones and other items worth up to £20,000 over three months from November 2016. Both men were on license from prison for similar offences at the time.

Jailing them for 44 months each for conspiracy to steal from motor vehicles, Judge Susan Evans QC said: "When you target handbags and wallets people lose items of substantial value which leads to high level of inconvenience."

Prosecuting at Salisbury Crown Court on Thursday, Edward Elton said 104 cars had been broken into.

Both men pleaded guilty and accepted responsibility for most, but not all of the 104 offences.

The court heard they targeted isolated, rural car parks, breaking into vehicles and taking items including 44 handbags and 13 purses and wallets.

On other occasions cash, jewellery, and even dog food was stolen.

Lenny, aged 30 and from Eyres Way, Salisbury, had three previous convictions for four theft offences.

Edward, aged 28 and from Lynch Close, Mere, had "an extensive record" of 18 convictions for 27 offences including theft, fraud and burglary.





Both men were jailed in 2015 alongside their brother Nicholas and father Wilfred for conspiracy to steal from cars in what was described as "a family business".

Mr. Elton said: "It's hard to consider what would be more inconvenient to any victim than losing a handbag, purse, wallet or mobile phone."

Defending, Berenice Mulvanny said Edward, who had a young son, had struggled with drug addiction.

And barrister Richard Onslow said Lenny, a father of three, had turned to drink after splitting from his partner.

"His world rather fell apart," he said.

"He regrets enormously that he went back to his old ways."

### **New Priority: Hare coursing and Poaching, All Areas of East Wiltshire.**

This policing priority was created on 7<sup>th</sup> August 2017 to allow for the policing team to focus on those areas where this illegal activity occurs. Incidents of daytime trespass in pursuit of game and poaching activity increases at this time of year, following harvest. Incident locations for this area include the Avebury area. Activity has been reported in the vicinity of The Sanctuary, where males with dogs have been seen, location times of 1735 and 2000 hours of 1<sup>st</sup> and 18<sup>th</sup> August 2017. Vehicles involved include two metallic Subaru Forresters.

Rural crime operations will be utilised in our efforts to target those who travel to Wiltshire to engage in this activity which is most impactful upon our rural communities.

### **Summer Priority: ASB, Litter and Drugs Activity, Coopers Meadow, Marlborough.**

Members of our policing team have been visiting this location since 6<sup>th</sup> June 2017 in response to reports of anti-social behaviour, litter and drugs usage. Engagement with the local community was completed, no offences were identified during patrols, and no further complaints received.

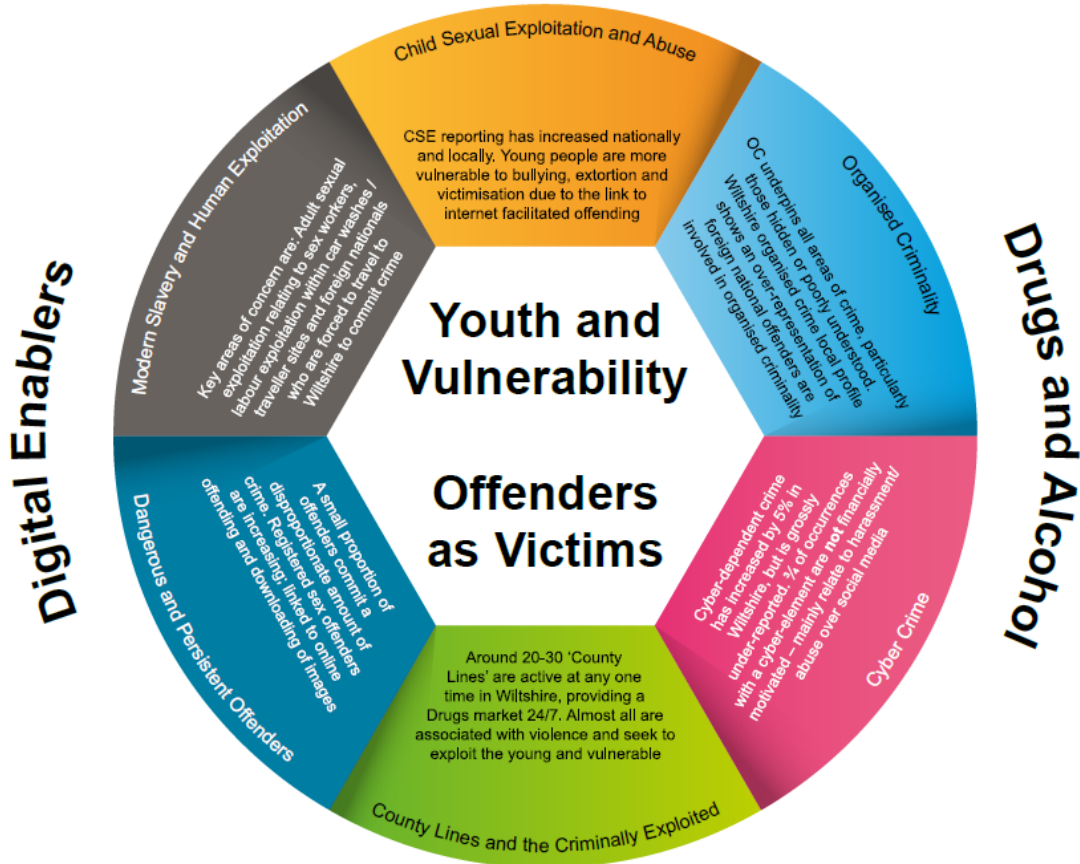
### **Other Information:**

#### **Failed Rave Attempt, West Kennett**

During the early hours of 6<sup>th</sup> August 2017 reports were received of a number of vehicles descending upon a remote location at West Kennett. Police officers arriving scene located in excess of 100 persons on site and approximately thirty vehicles. A direction to leave was authorised and the group quickly began to disperse. Two arrests were made, one for being drunk and disorderly and the second for possession of controlled drugs.

### **Wiltshire Police Control Strategy**

Below is our Control Strategy for your reference. This focuses on how we conduct our operational policing based on the Police and Crime Plan. We will continue to align our resources with the threat/harm/risks presented in line with the control strategy.



## Cyber Crime

Our Cyber Crime Prevention Officer is working closely with our partners within the region including attending Area Boards.

Many of the cyber scams which succeed occur following an individual's response to act quickly to an instruction or use distraction techniques so that less concentration occurs on the task in hand.

Please see the attached Get Safe Online leaflet.

## Dangerous and Persistent Offenders

See update regarding the Wells' brothers.

## Modern Slavery and Human Exploitation

Earlier this year our Public Protection Team established a Wiltshire Adult Sexual Exploitation Panel to allow for regular meetings of officers from each policing team and our partners, to share information and implement interventions to reduce risk of those vulnerable individuals identified as being at risk of sexual exploitation.

## County Lines and the Criminally Exploited

Patrol strategies are utilised for those individuals and premises identified as being at risk from organised criminality.



## **Organised Criminality**

Operation Sirius is a dedicated response team investigating Asian Gold burglaries, one of which recently occurred within this area. Our local officers have also been engaging with businesses in the town requesting they report anything or anyone acting suspiciously in their neighbourhood, unknown or unexpected doorstep traders, unusual vehicles, many offenders use high performance vehicles. Please be mindful if you see such a vehicle driving around your area. We work closely with forces nationally, sharing information, helping to tackle this criminality which occurs throughout the country.

## **Child Sexual Exploitation and Abuse**

Young people often enter the criminal justice system as a direct result of being exploited by others for financial or sexual gain. This has been recognised recently with a shift in focus to these young people being dealt with as Criminally Exploited and Vulnerable (CEV) individuals. Where circumstances dictate, this will mean that the safeguarding of these young people will take precedence over any criminal offences they may have committed. Those doing the exploiting are the individuals that should be targeted.

Please be vigilant for young people who may be being exploited in this way and report to Police through the normal channels.

**Nick Mawson**  
Sector Inspector,  
Wiltshire East CPT



# Update for Marlborough Area Board

<b>Update from</b>	<b>DWFRS District Commander Jason Underwood</b>
<b>Date of Area Board Meeting</b>	12 <sup>th</sup> September 2017

## Headlines/Key Issues

- Still looking for new Firefighters, please look at website or come and visit at your local Fire Station on a Monday evening 19.00 - 2100.

- 
- On going Risk awareness work with local businesses

- 
- Home Fire Safety Checks, Safe and Well Visits are available, these are free of charge, please see website for details.

- 
- Incidents since last Area Board for Marlborough

Automatic Fire Alarms - 7  
Fire - 2  
Other - 0  
Special Service - 3

Total - 12

Incidents since last Area Board for Ramsbury

Automatic Fire Alarms - 3  
Fires - 1  
Other - 2  
Special Service - 1

Total - 7

Grand total for both stations is 19 incidents between 18/07/17 and 31/08/17, the majority of the incidents for the 2 stations are a duplicate of the same incident. E.g. both Marlborough and Ramsbury attending the same incident.

May I take this opportunity to thank you all, I am retiring in October, my replacement is District Commander Matty Maggs whom you will meet at the next area board.

**NOT PROTECTIVELY MARKED**





## **New report reveals not all dementia patients receive same level of care in Wiltshire**



People being diagnosed with dementia in Wiltshire are not getting consistent care from their GP surgeries – according to a report published by the county’s independent health and care champion.

Healthwatch Wiltshire spoke to 195 people - including those who have been diagnosed with dementia, their families, volunteers and professionals - to find out about their experience of being diagnosed with dementia at their local GP surgery and mixed results were found.

Some people said their GPs were dismissive of their concerns about their memory; they didn’t get a clear diagnosis and they weren’t referred on to other services or offered reviews.

Others reported GPs who listened to people’s concerns and carried out memory tests, gave a clear diagnosis, prescribed medication, referred their patients to other support services and reviewed regularly.

One carer said: “The quality of dementia care can depend on your surgery – there are some positive experiences.”

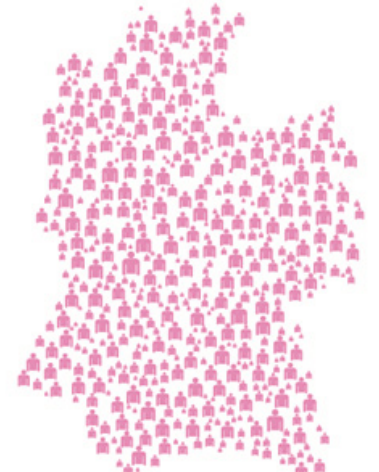
Another said: “My father was diagnosed last July by his GP. I found it very isolating. The GP didn’t inform us about what we could do and didn’t explain everything to me. Later on, the GP casually mentioned Dementia Advisers and said they would refer us. No one got in touch but I made direct contact and the services offered by the Alzheimer’s charities are great.”

The Healthwatch Wiltshire report *Talking to people about dementia: a focus on primary care*, first published in March this year, found other key themes, including:

- People said they valued a clear, direct dementia diagnosis – not everyone had this with some saying their GP had hinted it could be dementia but was not direct.
- Unpaid carers said the approach of their health care centre had an impact on their quality of life. Those who were recognised as a carer at their GP practice and given priority appointments reported a positive experience.
- Many people were concerned about the lack of ongoing support from their health care centre for people living with dementia. Some people reported they had not talked to their health care centre for a number of years.

Lucie Woodruff, Healthwatch Wiltshire manager, said: “With an estimated 6,624 people living with dementia in Wiltshire, we have made it a top priority to talk to people in the county about their experiences of dementia care and support.

“Our role at Healthwatch is to ensure we gather views both good and bad from members of the public and then pass these on to the decision-making bodies who plan, pay for and run these services in



**6,624 estimated number of people in Wiltshire living with dementia**

Wiltshire. It's important that people have a say in how their local health and care service is run, so they can help shape it for the better."

The report's findings have been presented to the Wiltshire Health and Wellbeing Board, the Dementia Delivery Board and the commissioners and providers of dementia services in the county.

Wiltshire Clinical Commissioning Group (Wiltshire CCG) and Wiltshire Council say work has and continues to be planned, delivered and reviewed around each area that has been commented on by the public in the Healthwatch Wiltshire report.



**9 Dementia Advisers in Wiltshire**

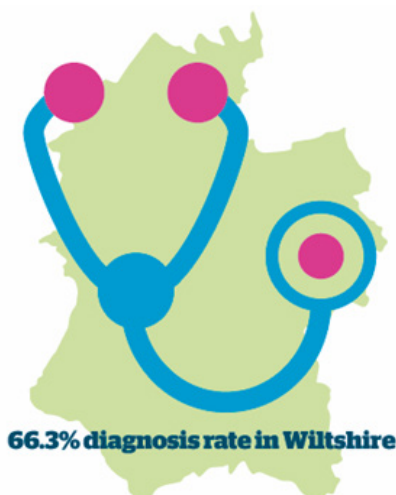
They say 256 practice staff across the county have received Dementia Friends training and the CCG's dementia lead has provided more training to GPs across the county. The feedback from Healthwatch reports has and will be sent to each GP practice and the key themes in the report have been identified and included in the Wiltshire Dementia Strategy Action Plan.

Ted Wilson, Director of Community Services and Joint Commissioning for Wiltshire CCG, said: "We work closely with our service providers and are using the feedback provided through the Healthwatch report to inform continuous improvement in services for those living with and affected by dementia.

"Dementia diagnosis rates for Wiltshire are above the national average and this is something we are really proud of. Our dementia advisers are doing a great job in supporting patients and their families post-diagnosis, at home and in their local communities. They provide confidential advice and information to help improve understanding about dementia, what might happen in the future and to make informed decisions about care and treatment.

"None of us can be complacent about the care available for people living with dementia; we must continuously strive to deliver the best services possible."

The full *Talking to people about dementia: a focus on primary care* report is available to download at: [healthwatchwiltshire.co.uk/reports-publications](http://healthwatchwiltshire.co.uk/reports-publications)



**66.3% diagnosis rate in Wiltshire**

**Contact us:**

Tel 01225 434218

[info@healthwatchwiltshire.co.uk](mailto:info@healthwatchwiltshire.co.uk)

[healthwatchwiltshire.co.uk](http://healthwatchwiltshire.co.uk)

**Healthwatch Wiltshire is a local independent organisation which exists to speak up for people on health and care. If you have used a service recently then we would like to hear from you. We use what people tell us when we meet with the commissioners and providers of services to make sure that they take account of your views and experiences.**

Healthwatch Wiltshire is part of Evolving Communities CIC, a community interest company limited by guarantee and registered in England and Wales with company number 08464602.

The registered office is at Unit 5, Hampton Park West, Melksham, SN12 6LH.



**August 2017****Overview**

NHS Wiltshire Clinical Commissioning Group (CCG) is responsible for commissioning a broad range of healthcare for the population of Wiltshire. We are led by experienced local GPs drawn from across the county, who provide clear clinical leadership to the big decisions affecting the future of healthcare provision in Wiltshire, carefully tailored to meet the differing needs of people locally.

Our vision is to ensure the provision of a health service which is high quality, effective, clinically-led and local. We are committed to delivering healthcare that meets the needs of Wiltshire people, to consult and engage with our population to enable them to be involved in decisions made about health services and to deliver those services to people in their own homes or as close to home as possible.

**The right healthcare, for you, with you, near you**

**Patients in Bath and North East Somerset, Swindon and Wiltshire Sustainability and Transformation Partnership (STP) area are set to benefit from expansion of diabetes prevention programme as NHS England drives forward changes to support people to live healthier lives.**

The head of NHS England, Simon Stevens, has announced 13 new areas, including Bath and North East Somerset, Swindon and Wiltshire partnership, are now live and ready to offer a leading NHS prevention programme to patients identified at risk of developing Type 2 diabetes.

Wave 2 of the [Healthier You: NHS Diabetes Prevention Programme](#) is part of a wider package of measures to support people at risk of type 2 diabetes to get healthier, keep well and reduce their risk of developing the disease.

Local people from the Bath and North East Somerset, Swindon and Wiltshire (BSW) area who are referred on to the programme will get tailored, personalised help to reduce their risk of developing the disease. Their support will include education on healthy eating and lifestyle choices, reducing weight through bespoke physical exercise programmes and portion control, which together have been proven to reduce the risk of developing the disease.

The programme, which is run collaboratively by NHS England, Public Health England and Diabetes UK, was officially launched last year, with the first wave made up of 27 areas and covering 26 million people – almost half of the country. The latest national figures reveal the programme is making good progress, with just under 50,000 people referred in Wave 1 and more than 18,000 on the programme in at the end of April. This exceeds the original target set in the NHS Mandate of 10,000 referrals during 2017/18.

Wave 2 areas will cover another 25% of the population, with an estimated 130,000 referrals and up to 50,000 additional places made available thanks to the expansion.

The ambition is for the programme to eventually cover the whole of the country and these figures could rise to as many as 200,000 referrals and more than 80,000 people on programmes by 2018/19.

Early evidence is positive and suggests that just under half of those taking up the programme are men – a much higher proportion than traditional weight loss programmes, while roughly a quarter of people are from black and ethnic minority communities.

# Around the clock healthcare in Wiltshire this summer



✓ Advice on how to stay well during the summer  
 ✓ Tips on treating a number of minor ailments

**NHS Choices**

- UK's biggest website: [www.nhs.uk](http://www.nhs.uk)
- Wiltshire advice available at: [www.yourcareyoursupportwiltshire.org.uk](http://www.yourcareyoursupportwiltshire.org.uk)

**NHS 111**

- A free non-emergency phone service
- Available 24 hours a day, 365 days a year
- Trained call handlers to help you

✓ Medical help and advice that is not an emergency  
 ✓ Advice about which NHS service to use  
 ✓ Information and support about what to do next

✓ Insect bites that cause a serious allergic reaction  
 ✓ Tick bites that cause a circular rash spreading from the bite site  
 ✓ New moles appearing or existing moles changing shape, size or colour  
 ✓ Conditions that can't be treated with over the counter medication or advice from a Pharmacist

**GP out of hours**

- Deal with a range of health problems and also run clinics and carry out simple surgical operations
- Most GP surgery services are available 8am - 6.30pm
- The GP out of hours service is available 6.30pm - 8am and all day at weekends and bank holidays. Call your GP surgery to access this service

**Walk-in centre**

- Treats non life-threatening minor illness and injuries
- Run by experienced clinicians who will see you on a first come, first served basis. You don't need to book an appointment
- The local service is Salisbury Walk-in Health Centre, Avon Approach, SP1 3SL. The centre is open: Mon - Fri: 6.30pm - 10pm, Sat - Sun and bank holidays: 8am - 8pm

✓ Insect bites  
 ✓ Sunburn  
 ✓ Stomach upsets

✓ Infection and rashes  
 ✓ Bruises and scratches  
 ✓ Emergency contraception

• Medicine experts who can provide advice on common ailments  
 • See your pharmacist at the first sign of illness before it gets more serious

**Pharmacy**

✓ Sunburn  
 ✓ Hayfever  
 ✓ Insect bites  
 ✓ Aches and pains

✓ Coughs and colds  
 ✓ Sore throat  
 ✓ Skin rashes

✓ Insect bites  
 ✓ Sunburn  
 ✓ Sprains and strains  
 ✓ Infection and rashes  
 ✓ Bruises and scratches  
 ✓ Broken bones

× Heat exhaustion  
 × Allergic reactions  
 × Chest pain  
 × Breathing difficulties  
 × Stomach pains  
 × Pregnancy problems

✓ Stroke  
 ✓ Persistent, severe chest pain  
 ✓ Breathing difficulties  
 ✓ Severe bleeding  
 ✓ Severe burns or scalds

✓ Fits that do not stop  
 ✓ Choking  
 ✓ Heart attack  
 ✓ Severe head injury  
 ✓ Severe allergic reactions

**A&E**

- Provides emergency care for people who have a life-threatening illness or injury
- Available 24 hours a day, 365 days a year
- Only use an A&E service in very serious or life-threatening situations

**Minor injuries unit**

- Treats non life-threatening minor injuries
- Run by experienced nurses who will see you on a first come, first served basis. You don't need to book an appointment
- The local MIUs are in the community hospitals at:
  - Chippenham, Rowden Hill, SN15 2AJ
  - Trowbridge, Adcroft Street, BA14 8PH

Both services are open 7am - 11pm

Follow us at: [@NHSWiltshireCCG](https://twitter.com/NHSWiltshireCCG)  
[www.facebook.com/NHSWiltshireCCG](https://www.facebook.com/NHSWiltshireCCG)

#RightPlaceRightTime

Wiltshire Clinical Commissioning Group is helping people to make the right decision about where to go for healthcare treatment over the summer months in Wiltshire, with the help of an easy to use healthcare clock – a signposting tool to help people choose the right healthcare service for their illness or injury.

**Report to** Marlborough Area Board  
**Date of meeting** 12<sup>th</sup> September 2017  
**Title of report** Youth Grant Funding

**Purpose of the Report:**

To consider the applications for funding listed below together with the recommendations of the Local Youth Network (LYN) Management Group.

Applicant	Amount requested	LYN Management Group recommendation
Marlborough Area Development Trust	£1996.89	Recommended

**1. Background**

The recommendation from the LYN Management Group has been made in accordance with the following guidelines:

- Leaders guidance for Community Area Boards on Positive Activities for Young People
- Positive Activities for Young People local Youth Network Terms of Reference
- Positive Activities Toolkit for Community Area Boards

Young people have considered this application and identified it as a priority for Area Board funding.

**2. Main Considerations**

- 2.1. Councillors will need to be satisfied that Youth Grant Funding awarded in the 2015/2016 year are made to projects that can realistically proceed within a year of it being awarded.
- 2.2. Councillors will need to decide and be assured that young people and the community will benefit from the funding being awarded and the project/positive activity proceeding. The application should meet the identified needs, priorities and outcomes for young people in the areas, as identified in the LYN Needs Assessment and Strategic Plan.
- 2.3. Councillors will need to ensure measures have been taken in relation to safeguarding children and young people.
- 2.4. Councillors will need to ensure that young people have been central to each stage of this Youth Grant Funding application.

**3. Environmental & Community Implications**

Youth Grant Funding will contribute to the continuance and/or improvement of cultural, social and community activity and wellbeing in the community area, the extent of which will be dependent upon the individual project.

**4. Financial Implications**

Financial provision had been made to cover this expenditure.

**5. Legal Implications**

There are no specific legal implications related to this report.

**6. Human Resources Implications**

There are no specific human resources implications related to this report.

**7. Equality and Inclusion Implications**

Ensuring that Community Area Boards and LYNs fully consider the equality impacts of their decisions in designing local positive activities for young people is essential to meeting the Council’s Public Sector Equality Duty.

**8. Safeguarding Implications**

The Area Board has ensured that the necessary policies and procedures are in place to safeguard children and young people. The Community Youth Officer has assessed this application agreed it meets safeguarding requirements.

**9. Applications for consideration**

Application ID	Applicant	Project Proposal	Requested
(hyper link) <a href="#">Digital Makers Grant link</a>	Marlborough Area Development Trust	Digital Makers Club	£1996.89
<p><b>Project description</b></p> <p>To provide a set of technical equipment and other support resources to enable a free lunchtime weekly Digital Making Club within St Johns School starting in the 2017-18 school year and ad hoc free workshops throughout the Marlborough area to be held in community locations, for example, pop up workshops at youth clubs around the whole community area.</p> <p>They have 3 streams for young people, from learning the skills using ready made packs, to working on projects that Digital Makers within MADT are working on, such as a weather station, to creating their own research and development projects.</p> <p>STEM skills are in shortage as less and less young people pursue these areas as a career. This project aims to inspire and create new opportunities for young people to learn skills and develop ideas using advanced technology.</p> <p>This project is supported by St Johns staff and they will host the club.</p>			
<p><b>Recommendation of the Local Youth Network Management Group</b></p> <p>The application meets the grant criteria 2017/18 It is recommended for approval.</p>			

No unpublished documents have been relied upon in the preparation of this report

**Report Author**

Helen Bradley, Locality Youth Facilitator  
Tel: 07919396465 Email: helen.bradley@wiltshire.gov.uk





Future Community Area Grant funding from Marlborough Area Board.

Beginning at the September 2017 meeting, Marlborough Area Board has decided that future Community Area Grant applications, for capital funding, will be deferred until the board's meeting in March 2018. This decision has been taken because Marlborough Area Board has already funded several large local projects that the board felt to be important to the local area and merited significant financial support. As such, Marlborough Area Board has relatively little capital budget remaining for the 2017/18 financial year.

By deferring applications until March 2018 and the last area board meeting of the financial year, Marlborough Area Board will be able to assess applications against one another and support those projects that it feels best meet the local priorities that were identified at Marlborough's Joint Strategic Assessment event (list of those priorities here: <http://wiltshirejsa.org.uk/wp-content/uploads/2017/03/Marlborough-priorities.pdf>)

If grant applications come in of an urgent or time critical nature, Marlborough Area Board will assess those on a case by case basis and if deemed necessary, will make a funding decision at the next area board meeting.

This decision does not affect applications to the youth activities or health & wellbeing grant schemes.

If you have any questions about this decision to defer applications or you have an idea for a project and would like to discuss it, please contact Andrew Jack, Marlborough's Community Engagement Manager on 01225 713109 or [andrew.jack@wiltshire.gov.uk](mailto:andrew.jack@wiltshire.gov.uk)

